



Industrial coating



BAYD Company Overview and Mission

BAYD Chemical Company was founded in 2015 and is headquartered in Guangdong Province, China. Since its inception, the company has specialized in the production and research and development of high-quality coatings, with operations all over the world. The company's core mission is to create unlimited value for employees, society and investors through continuous innovation.



BAYD's Vision

BAYD Chemical Company pursues ultimate cost-effectiveness and high product quality, aiming to create unlimited value for employees, society, and investors.

With excellent products, excellent culture, excellent customer relationships, and excellent collaborative teams, we are committed to becoming a globally outstanding chemical company.

Why choose us

Continuous innovation capability

- We always pay attention to the latest developments in the industry, actively innovate, and provide cutting-edge solutions.
- We encourage innovative thinking that can bring unique value to our customers.



Continuous cost-effectiveness

- Our service prices are reasonable and cost-effective.
- We can provide customers with long-term cost savings and value enhancement.



Professional abilities and experience

- We have profound professional knowledge and rich practical experience in related fields.
- Our team is composed of industry experts who can provide high-quality solutions.



BAYD | INDUSTRIAL COATING

- ✓ Complete category
- ✓ Full range industrial coating systems

One-Stop Service Whole Process



From raw materials to finished products, the layout of the entire industry chain of industrial paints product types, covering **more than 90%** of the industry.



CATALOGUE

Epoxy Resin Coating

- 1.EZP-D15 Epoxy Primer
- 2.EZP-D17 High Build Epoxy Primer
- 3.EZ-D77 Epoxy Zinc-Rich Primer
- 4.EZ-D99 Epoxy Zinc-Rich Primer
- 5.MIO-Z27 High Build Epoxy MIO Midcoat
- 6.EAC-M30X Epoxy Topcoat
- 7.EAC-GS50 Epoxy Topcoat
- 8.EAC-SPA50 Epoxy Resin Coating
- 9.EAC-RM40 Epoxy Resin Coating
- 10.EZP-WH200 Epoxy Resin Maintenance Coating
- 11.EZP-WH300 Epoxy Resin Maintenance Coating
- 12.EOE-M50 Epoxy Ethane Ester Coating
- 13.EPN-M556 Epoxy Phenolic Coating

Polyurethane Coating

- 14.PUR-M20 Matte Polyurethane Coating
- 15.PUR-M50 Semi-Gloss Polyurethane Coating
- 16.PUR-M90 High-Gloss Polyurethane Coating
- 17.PUR-EZ80 Polyaspartic Acid Coating
- 18.PUR-HS90 Automotive Polyurethane Topcoat

19.PUR-MQ Polyurethane Varnish

- 20.PUR-PC50 Semi-Gloss Polyurethane Coating
- 21.PUR-PC80 High-Gloss Polyurethane Coating
- 22.PUR-SC20 Matte Polyurethane Coating
- 23.PUR-SC50 Semi-Gloss Polyurethane Coating
- 24.PUR-SC80 High-Gloss Polyurethane Coating

High temperature paint

- 25.BLA-400 High Temperature Resistant Paint
400° - 450°
- 26.BLA-600 High Temperature Resistant Paint
600° - 650°

Acrylic paint

- 27.AR-D1071 Acrylic Primer
- 28.AR-M50 Acrylic Topcoat

Chlorinated Rubber Coating

- 29.CR-D1134 Chlorinated Rubber Primer
- 30.CR-M576 Chlorinated Rubber Topcoat
- 31.CR-FW33 Antifouling Paint

Alkyd paint

- 32.AK-D11 Alkyd Metal Primer
- 33.AK-D13 Alkyd Marine Primer
- 34.AK-M20 Matte/Alkyd Topcoat
- 35.AK-M50 Semi-Gloss/Alkyd Topcoat
- 36.AK-M70 High-Gloss/Alkyd Topcoat
- 37.AK-M80 High-Gloss/Alkyd Topcoat
- 38.AK-M90 High-Gloss/Alkyd Topcoat

Water-Based Industrial Paint

- 39.WE-D15 Water-Based Epoxy Primer
- 40.WZF-D85 Water-Based Epoxy Zinc-Rich Primer
- 41.WPE-M50 Water-Based Epoxy Topcoat
- 42.WPU-M90 Water-Based Polyurethane Topcoat
- 43.WAS-M50 Water-Based Alkyd Topcoat
- 44.WPA-M50 Water-Based Acrylic Topcoat
- 45.WACR-M2 Water-Based Reflective Thermal Insulation Paint

EZP-D15 Epoxy Primer

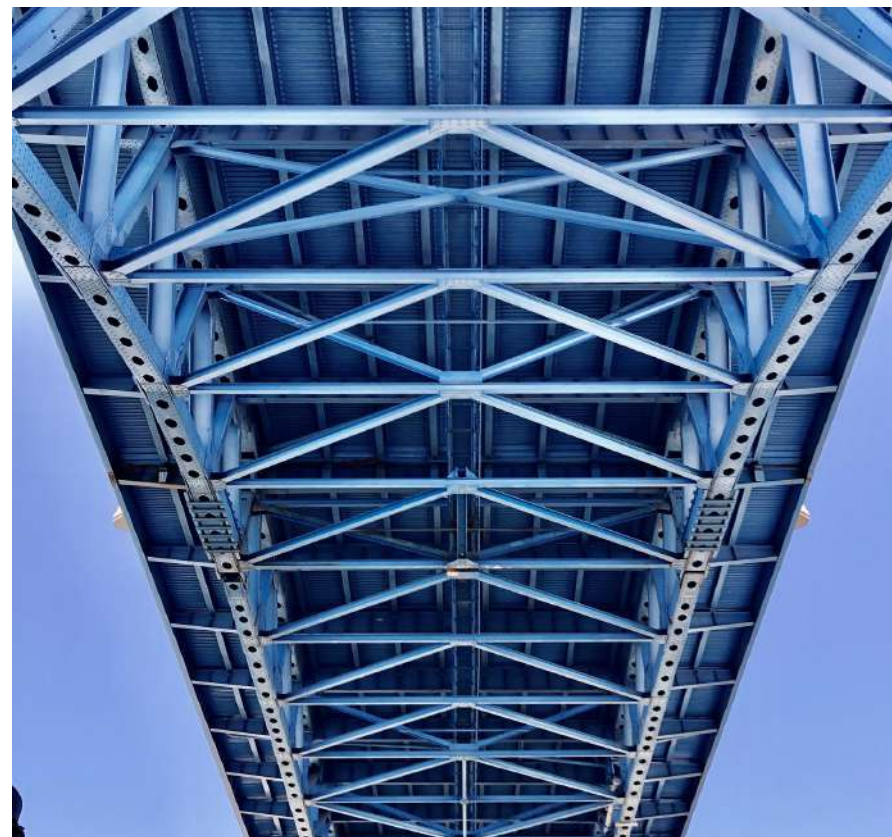
Product Description:

EZP-D15 is a two-component polyamide cured high build epoxy primer containing zinc phosphate.

Typical uses and features:

Field for industrial protective paint: Recommended for use on bridges, transportation equipment, cranes, steel struts, conveyors and other steel structures, machinery and equipment.

- ◆ Quickly recoatable primer used as a primer or intermediate coat in paint systems exposed to abrasion and chemical stress. The coating adheres very well to steel, zinc and aluminum surfaces, making it a versatile, all-around primer for a variety of materials.
- ◆ This product has a CCS (Marine Equipment Directive) certificate and the certificate No. to be GZ21PWA00013, so it can be used for painting interior surfaces of ships.
- ◆ The primer can be tinted in a variety of colors, which helps achieve optimal hiding power of the topcoat.
- ◆ Can be used as an intermediate coat for zinc-rich epoxy resins and zinc silicate coatings.
- ◆ Can be recoated quickly.
- ◆ Resistant to gray water/wastewater when 2x125µm is applied.



Product data:

Item	Result	In accordance with
Solid Content $\pm 2\%$	68	ISO 3251 (Admixture)
Solid Volume $\pm 2\%$	55	ISO 3233 (Admixture)
Density kg/L (± 0.1)	1.3-1.4	Theoretical value
Gloss	Matte	ISO 2813
Color	BAYD Primer color card	

EZP-D17 High Build Epoxy Primer

Product Description:

EZP-D17 is a two-component modified epoxy resin coating containing anti-corrosion pigments.

Typical uses and features:

Field for industrial protective paint: Recommended for use on building frames, tubular bridges, conveyors and other steel structures and equipment.

- ◆ Good adhesion to steel, zinc and aluminum surfaces. It can achieve high film thickness in one application. High solids products ensure long service life of coating systems.
- ◆ High strength primer for coating systems in harsh environments. This product is used in NORSOK approved systems as an intermediate coating on surfaces exposed to marine conditions.
- ◆ The speed of the painting process can be adjusted by selecting the hardener. Can be used in sub-zero temperatures.
- ◆ Used as a primer or intermediate coat on surfaces exposed to climatic, mechanical and chemical stresses.
- ◆ Colored with zinc phosphate.



Product data:

Item	Result	In accordance with
Solid Content $\pm 2\%$	83	ISO 3251 (Admixture)
Solid Volume $\pm 2\%$	72	ISO 3233 (Admixture)
Density kg/L (± 0.1)	1.5	Theoretical value
Gloss	Matte	ISO 2813
Color	BAYD Primer color card	

EZ-D77 Epoxy Zinc-Rich Primer

Product Description:

EZ-D77 is a two-component polyamide cured zinc-rich epoxy resin coating.

Typical uses and features:

Field for industrial protective paint: Recommended for bridges, cranes and steel frames as well as steel structures and equipment in the forestry and chemical industries such as tubular bridges, conveyors etc.

- ◆ The zinc content exceeds 80%, fully complying with the requirements of ISO 12944-5 standard for zinc-rich primers. The primer provides good cathodic protection to the steel.
- ◆ For use in coating systems requiring extended durability.
- ◆ Used as a primer in epoxy, polyurethane, acrylic and chlorinated rubber systems for steel surfaces exposed to harsh weather conditions.
- ◆ Can be used on weathered surfaces without topcoat.



Product data:

Item	Result	In accordance with
Solid Volume $\pm 2\%$	52	ISO 3233 (Admixture)
Density kg/L (± 0.1)	2	Theoretical value
Gloss	Matte	ISO 2813
Color	Grey	

EZ-D99 Epoxy Zinc-Rich Primer

Product Description:

EZ-D99 a two-component polyamide cured zinc-rich epoxy resin coating.

Typical uses and features:

Field for industrial protective paint: Recommended for bridges, cranes and steel frames as well as steel structures and equipment in the forestry and chemical industries such as tubular bridges, conveyors etc.

- ◆ With prequalification in NORSOK System 1, making it an excellent choice for the most demanding applications such as offshore environments, refineries, power plants and bridges.
- ◆ The zinc content of EZ-D99 exceeds the requirements of ISO 12944-5 standard for zinc-rich primers. This product provides excellent cathodic protection for steel.
- ◆ Used as a primer in epoxy, polyurethane, acrylic and chlorinated rubber systems for steel surfaces exposed to harsh weather conditions.
- ◆ Can be used on weathered surfaces without topcoat.



Product data:

Item	Result	In accordance with
Solid Volume $\pm 2\%$	55	ISO 3233 (Admixture)
Density kg/L (± 0.1)	2.6	Theoretical value
Gloss	Matte	ISO 2813
Color	Grey	

MIO-Z27 High Build Epoxy MIO Midcoat

Product Description:

MIO-Z27 is a two-component polyamide cured epoxy coating colored with micaceous iron oxide.

Typical uses and features:

Field for industrial protective paint: Suitable for steel structures and equipment such as bridges, storage tank outer walls, steel frames, conveyors, and tubular bridges.

- ◆ Due to its micaceous iron oxide pigmentation and excellent adhesion to steel surfaces, the coating forms very strong and durable films. It can be used as a primer or intermediate coat in corrosive environments. Using special curing agents, the paint can be cured even in sub-zero temperatures.
- ◆ Recoating can be carried out after a long period of time. The features that do not require coarsening saves time and reduces the cost of paint system application.
- ◆ Impressive track record of projects in bridge construction, pulp, paper and power industry. This coating is widely used in NORSOK and SSG approved systems.
- ◆ Used as a primer or intermediate coat in epoxy and polyurethane systems exposed to severe weathering and spatter.
- ◆ Can be recoated quickly.



Product data:

Item	Result	In accordance with
Solid Content $\pm 2\%$	78	ISO 3251 (Admixture)
Solid Volume $\pm 2\%$	60	ISO 3233 (Admixture)
Density kg/L (± 0.1)	1.5	Theoretical value
Gloss	Matte	ISO 2813
Color	Grey, red and black.	

EAC-M30X Epoxy Topcoat

Product Description:

EAC-M30X is a two-component, amine adduct-cured, chemically resistant epoxy coating.

Typical uses and features:

Field for industrial protective paint: Recommended for bridges, storage tanks and different types of steel structures and equipment in the wood processing and chemical industries, such as tubular bridges, conveyors, paper machines, etc.

- ◆ Particularly used as a topcoat on objects exposed to severe wear and chemical attack. Resistant to +150° C dry heat and chemically active gases and dust.
- ◆ Because of the CE mark, it can also apply to concrete surfaces in the processing industry. Soaks well in water, oil and dilute solutions of non-oxidizing acids, bases and salts.
- ◆ Thousands of colors are available. Abrasion and chemical resistance allow surfaces to retain color with longer time.
- ◆ Withstands temperatures of +60°C when immersed.
- ◆ Only resistant to temporary splashes of oxidizing acids and bleach solutions.
- ◆ Withstands immersion in mineral/plant/animal fats and oils.



Product data:

Item	Result	In accordance with
Solid Content $\pm 2\%$	69	ISO 3251 (Admixture)
Solid Volume $\pm 2\%$	55	ISO 3233 (Admixture)
Density kg/L (± 0.1)	1.3-1.4	Theoretical value
Gloss	Gloss	ISO 2813
Color	BAYD、RAL、NCS color card, system advanced colored.	

EAC-GS50 Epoxy Topcoat

Product Description:

EAC-GS50 is a two-component, polyamide-cured, thick-build epoxy resin coating and intermediate coating.

Typical uses and features:

Field for industrial protective paint: Recommended for use on transportation equipment, steel frames, conveyors, tubular bridges and other steel structures.

- ◆ Used as topcoat or intermediate coat in epoxy resin and polyurethane systems. The coating can also be used as a sealer or single coating and applied directly to zinc and aluminum surfaces.
- ◆ Used to protect steel frames, conveyors, tubular bridges and other steel structures. Thousands of colors to choose from.
- ◆ Used on surfaces exposed to abrasion and mechanical and/or chemical stress.
- ◆ It can be quickly recoated and ready for treatment at any time.



Product data:

Item	Result	In accordance with
Solid Content $\pm 2\%$	71	ISO 3251 (Admixture)
Solid Volume $\pm 2\%$	57	ISO 3233 (Admixture)
Density kg/L (± 0.1)	1.3-1.4	Theoretical value
Gloss	Semi-gloss	ISO 2813
Color	BAYD、RAL、NCS color card, system advanced colored.	

EAC-SPA50 Epoxy Resin Coating

Product Description:

EAC-SPA50 is a two-component modified epoxy resin coating.

Typical uses and features:

Field for industrial protective paint: Recommended for use on building frames, tubular bridges, conveyors and other steel structures and equipment.

- ◆ Can be applied to steel, zinc and aluminum. Can be recoated quickly. It is also suitable as a single-coat system.
- ◆ Forms a durable film with good mechanical, chemical and weather resistance. Ideal as a primer, intermediate coat or topcoat on stressed surfaces.



Product data:

Item	Result	In accordance with
Solid Content $\pm 2\%$	81	ISO 3251 (Admixture)
Solid Volume $\pm 2\%$	68	ISO 3233 (Admixture)
Density kg/L (± 0.1)	1.4-1.5	Theoretical value
Gloss	Semi-gloss	ISO 2813
Color	BAYD、RAL、NCS color card, system advanced colored.	

EAC-RM40 Epoxy Resin Coating

Product Description:

EAC-RM40 is a two-component modified epoxy resin coating.

Typical uses and features:

Field for industrial protective paint: Recommended for use on building frames, tubular bridges, conveyors, ship hulls and other steel structures and equipment.

- ◆ Universal primer, single coat paint and topcoat. This product provides good adhesion to steel, zinc and aluminum surfaces exposed to severe abrasion or chemical stress.
- ◆ Suitable for concrete surfaces and with CE marking.
- ◆ Can be used on steel structures in wet environments such as pontoons, ballast tanks and inside ship hulls. Other areas of use include steel structures in underground and underwater applications and surfaces exposed to severe splash. Not suitable for swimming pools.
- ◆ Resistant to gray water/wastewater when 2x125µm is applied.



Product data:

Item	Result	In accordance with
Solid Content $\pm 2\%$	77	ISO 3251 (Admixture)
Solid Volume $\pm 2\%$	65	ISO 3233 (Admixture)
Density kg/L (± 0.1)	1.2-1.3	Theoretical value
Gloss	Semi-gloss	ISO 2813
Color	BAYD、RAL、NCS color card, system advanced colored.	

EZP-WH200 Epoxy Resin Maintenance Coating

Product Description:

EZP-WH200 is a two-component high solids aluminum pigment modified epoxy resin maintenance coating suitable for demanding surfaces.

Typical uses and features:

Field for industrial protective paint: Recommended for use in repairing damage caused by shipping or installation.

- ◆ Ideal solution for maintenance coatings since it has very good adhesion to hand-prepared steel. As a high-solids product, this coating has lower VOC emissions than traditional epoxy coatings.
- ◆ It can withstand immersion in water, so it can be used for steel structures immersed in water or buried in soil, etc.
- ◆ Due to its aluminum pigmentation, it forms a very tight film with good chemical and abrasion resistance. The coating is used in systems for repainting and repairing paint of steel surfaces that are difficult to clean, such as bridges, reservoirs and different types of steel structures and equipment in the wood processing and chemical industries.
- ◆ High film-forming performance, it can also be progressed by brush.
- ◆ It can also be used on old alkyd paint surfaces.
- ◆ Can be used as a single coat paint.
- ◆ Winter grade EZP-WG200 can be cured at lower temperatures.



Product data:

Item	Result	In accordance with
Solid Content $\pm 2\%$	87	ISO 3251 (Admixture)
Solid Volume $\pm 2\%$	80	ISO 3233 (Admixture)
Density kg/L (± 0.1)	1.4	Theoretical value
Gloss	Semi-gloss	ISO 2813
Color	Aluminum (systematic advanced coloring for reddish aluminum). Colors will change when used outdoors.	

EZP-WH300 Epoxy Resin Maintenance Coating

Product Description:

EZP-WH300 is a two-component, high solids, modified colorable epoxy resin maintenance coating suitable for demanding surfaces.

Typical uses and features:

Field for industrial protective paint: Recommended used for repairing damage caused by shipping or installation.

- ◆ Ideal solution for maintenance coatings as it has very good adhesion to hand-prepared steel. As a high-solids product, the coating has lower VOC emissions than traditional epoxy coatings.
- ◆ It can withstand immersion in water, so it can be used for steel structures immersed in water or buried in soil, etc. This product can also be used in the painting of hydropower stations. As a CE marked product, it is suitable to use on concrete surfaces.
- ◆ Colorable EZP-WH300 can form very tight films with good chemical and abrasion resistance. The product is used for the repainting and repairing paint of steel surfaces that are difficult to clean, such as bridges, reservoirs and different types of steel structures and equipment in the wood processing and chemical industries.
- ◆ High film-forming performance, it can also be progressed by brush.
- ◆ It can also be used on old alkyd paint surfaces.
- ◆ Can be used as a single coat paint.
- ◆ Winter grade EZP-WG300 can be cured at lower temperatures.



Product data:

Item	Result	In accordance with
Solid Content $\pm 2\%$	88	ISO 3251 (Admixture)
Solid Volume $\pm 2\%$	80	ISO 3233 (Admixture)
Density kg/L (± 0.1)	1.5	Theoretical value
Gloss	Gloss	ISO 2813
Color	BAYD、RAL、NCS color card, system advanced colored.	

EOE-M50 Epoxy Ethane Ester Coating

Product Description:

EOE-M50 is a two-component, high solid content epoxy ethane ester coating containing active anti-corrosive pigments.

Typical uses and features:

Field for industrial protective paint: Suitable use for steel structures, equipment and machinery such as earth-moving machinery, traction and lifting equipment, forklifts, agricultural machinery, electrical appliances, water pumps, etc.

- ◆ An option when products containing isocyanates cannot be used. The quality of this paint is similar to polyurethane.
- ◆ Does not affect protection or performance. Laboratory and field tests proved the effectiveness of the EOE-M50 system in providing excellent corrosion protection for both internal and external service environments.
- ◆ High solids content allows for application in thick layers, allowing for faster production. This product is ideal for OEM and other steel structures, equipment and machinery.
- ◆ Used as a single coat or topcoat in epoxy ethylene ester-based systems on steel surfaces exposed to abrasion and chemicals in harsh weather conditions.
- ◆ High film-forming performance, up to 100 $\mu\text{m}/\text{layer}$.
- ◆ Resistant to continuous high temperature with dry heat up to $+80^{\circ}\text{C}$ and temporary dry heat up to $+120^{\circ}\text{C}$.
- ◆ Isocyanate-free DTM product.
- ◆ Good corrosion resistance and easy to use.



Product data:

Item	Result	In accordance with
Solid Content $\pm 2\%$	77	ISO 3251 (Admixture)
Solid Volume $\pm 2\%$	65	ISO 3233 (Admixture)
Density kg/L (± 0.1)	1.5	Theoretical value
Gloss	Optional	ISO 2813
Color	BAYD、RAL、NCS color card, system advanced colored.	

EPN-M556 Epoxy Phenolic Coating

Product Description:

EPN-M556 is a two-component chemical-resistant epoxy phenolic coating.

Typical uses and features:

High temperature resistance. Withstands continuous dry heat up to +200°C.

May become discolored. Suitable for immersion in hot water between +65°C–90°C.

- ◆ Due to its binder type, it is particularly resistant to many chemicals, including light crude oil distillates such as gasoline, diesel and kerosene. Resistance to fuels and chemicals is listed in separate chemical resistance tables.
- ◆ Resistant to immersion in dilute solutions of non-oxidizing acids, alkalis and salts.
- ◆ Resistant to gray water/wastewater when 2x150µm is applied.
- ◆ As a product with CE marking, it is suitable for use on concrete surfaces.



Product data:

Item	Result	In accordance with
Solid Content ±2%	83	ISO 3251 (Admixture)
Solid Volume±2%	72	ISO 3233 (Admixture)
Density kg/L (±0.1)	1.45	Theoretical value
Gloss	Gloss	ISO 2813
Color	White (Approximately RAL 9010) 、 Beige (RAL1015) 、 Light Grey (RAL 7032 & 7044) and a limited range of other colors available upon request.	

PUR-M20 Matte Polyurethane Coating

Product Description:

PUR-M20 is a two-component matte polyurethane coating containing anti-corrosion pigments and the hardener is aliphatic isocyanate.

Typical uses and features:

Field for industrial protective paint: Recommended for use on shipping and transport equipment, tank exteriors, steel frames and other steel structures, machinery and equipment.

- ◆ Due to its anti-corrosive pigmentation, PUR-M20 can be used as a single coating on steel, zinc and aluminum surfaces. This coating is also used as a primer or semi-matte topcoat in epoxy/polyurethane systems.
- ◆ Weather resistance and abrasion resistance make the PUR-M20 to be ideal choice for shipping and transportation equipment, storage tank exteriors, steel frames and other steel structures, machinery and equipment.
- ◆ This product has a CCS (Marine Equipment Directive) certificate with the number to be GZ21PWA00013, so it can be used for painting the interior surfaces of ships.
- ◆ Can also be applied to stainless steel.



Product data:

Item	Result	In accordance with
Solid Content $\pm 2\%$	70	ISO 3251 (Admixture)
Solid Volume $\pm 2\%$	57	ISO 3233 (Admixture)
Density kg/L (± 0.1)	1.3	Theoretical value
Gloss	Semi-Matte	ISO 2813
Color	BAYD、RAL、NCS color card, system advanced coloring	

PUR-M50 Semi-Gloss Polyurethane Coating

Product Description:

PUR-M50 is a two-component, durable, non-chalking semi-gloss polyurethane coating with the hardener to be aliphatic isocyanate.

Typical uses and features:

Field for industrial protective paint: Recommended for use on shipping and transport equipment, tank exteriors, steel frames and other steel structures, machinery and equipment.

- ◆ Long time tested, easy-to-use, universal topcoat suitable for building steel structures and machinery. This paint comes in a variety of colors, including metallic effects.
- ◆ Forms a durable, easy-to-clean, non-chalkifying topcoat with good gloss and color retention. The coating is also approved for use on top of intumescent coatings.
- ◆ This product has a CCS (Marine Equipment Directive) certificate with the number to be GZ21PWA00013, so it can be used for painting the interior surfaces of ships.
- ◆ Excellent weather and abrasion resistance.
- ◆ Used as a semi-gloss topcoat for epoxy and polyurethane systems exposed to weathering and/or chemical stress.



Product data:

Item	Result	In accordance with
Solid Content $\pm 2\%$	70	ISO 3251 (Admixture)
Solid Volume $\pm 2\%$	56	ISO 3233 (Admixture)
Density kg/L (± 0.1)	1.3	Theoretical value
Gloss	Semi-Gloss	ISO 2813
Color	BAYD、RAL、NCS color card, system advanced coloring	

PUR-M90 High-Gloss Polyurethane Coating

Product Description:

PUR-M90 is a two-component, high-gloss polyurethane coating with the hardener to be aliphatic isocyanate.

Typical uses and features:

Field for industrial protective paint: Recommended for use on shipping and transport equipment, tank exteriors, steel frames and other steel structures, machinery and equipment.

- ◆ Forms a durable, easy-to-clean, non-chalkifying topcoat with excellent gloss and color retention. The range of paint colors is almost unlimited, including metallic effects.
- ◆ Excellent weather and abrasion resistance make this product a very good solution for original equipment manufacturing such as agricultural machinery and transport equipment.
- ◆ Can be used on interior wooden surfaces such as metal shutters or kitchen doors.
- ◆ Recommended to be used as a gloss decorative topcoat for epoxy resin systems on a variety of substrates (e.g. steel, aluminum, concrete, etc.) exposed to severe weathering and/or chemical stress.
- ◆ Due to the CE mark, it can also be used on the surface of concrete coating systems.



Product data:

Item	Result	In accordance with
Solid Content $\pm 2\%$	68	ISO 3251 (Admixture)
Solid Volume $\pm 2\%$	55	ISO 3233 (Admixture)
Density kg/L (± 0.1)	1.2	Theoretical value
Gloss	High Gloss	ISO 2813
Color	BAYD、RAL、NCS color card, system advanced coloring	

PUR-EZ80 Polyaspartic Acid Coating

Product Description:

PUR-EZ80 is a two-component glossy polyaspartic acid paint containing anti-corrosion pigments and the hardener is aliphatic isocyanate. Fast curing and drying coating that can be applied as a single coat for quick return to use.

Typical uses and features:

Field for industrial protective paint : Recommended for use as a single coat finish on metal, particularly suitable for agricultural and earthmoving machinery and other machinery and equipment.

- ◆ Due to its high solid content, it has less impact on the environment than traditional solvent-based topcoats.
- ◆ Can be applied over thick films to speed up the painting process.
- ◆ Good mechanical abrasion resistance. The paint forms a very tough and scratch-resistant surface quickly after application.
- ◆ Excellent spraying performance, even with airless spraying.
- ◆ Excellent mechanical resistance and edge retention.
- ◆ Creates an easy-to-clean surface with very good color retention.



Product data:

Item	Result	In accordance with
Solid Content $\pm 2\%$	86	ISO 3251 (Admixture)
Solid Volume $\pm 2\%$	81	ISO 3233 (Admixture)
Density kg/L (± 0.1)	1.4	Theoretical value
Gloss	High Gloss	ISO 2813
Color	BAYD、RAL、NCS color card, system advanced coloring	

PUR-HS90 Automotive Polyurethane Topcoat

Product Description:

PUR-HS90 is a two-component, high solid content glossy polyurethane coating with the hardener to be aliphatic isocyanate.

Typical uses and features:

Field for industrial protective paint : Recommended for use on shipping and transport equipment, tank exteriors, steel frames and other steel structures, machinery and equipment.

- ◆ The appearance of the painting surface is close to the automotive finishes. It will form a smooth and silky surface with excellent gloss. The paint can remain its gloss much longer than regular polyurethane paints.
- ◆ Can be used without "wet-on-wet" technique, even with airless spraying. This will shorten the production time and thus increases production efficiency.
- ◆ Durable, easy to clean, non-chalkifying, with good gloss and color retention.
- ◆ Recommended to be used as a gloss topcoat for epoxy systems exposed to weathering and/or chemical stress.
- ◆ The VOCs is lower than the conventional polyurethane topcoats.



Product data:

Item	Result	In accordance with
Solid Content $\pm 2\%$	64	ISO 3251 (Admixture)
Solid Volume $\pm 2\%$	75	ISO 3233 (Admixture)
Density kg/L (± 0.1)	1.3	Theoretical value
Gloss	High Gloss	ISO 2813
Color	BAYD、RAL、NCS color card, system advanced coloring	

PUR-MQ Polyurethane Varnish

Product Description:

PUR-MQ is a two-component, full-gloss polyurethane varnish and the hardener is aliphatic isocyanate.

Typical uses and features:

Field for industrial protective paint: Recommended for use on shipping and transport equipment, tank exteriors, steel frames and other steel structures, machinery and equipment.

- ◆ Provides extra protection as well as color and gloss improvements. This paint is used as a topcoat in polyurethane coating systems, making the film durable, non-chalkifying and easy to clean.
- ◆ This product has a CCS (Marine Equipment Directive) certificate with the number to be GZ21PWA00013, so it can be used for painting the interior surfaces of ships.
- ◆ Suitable for a variety of surfaces. It can also adhere well to aluminum and zinc surfaces.
- ◆ Excellent weather resistance and abrasion resistance.
- ◆ For industrial use only in accordance with Directive 1999/13/EC.



Product data:

Item	Result	In accordance with
Solid Content $\pm 2\%$	52	ISO 3251 (Admixture)
Solid Volume $\pm 2\%$	46	ISO 3233 (Admixture)
Density kg/L (± 0.1)	1.0	Theoretical value
Gloss	High Gloss	ISO 2813
Color	Transparent	

PUR-PC50 Semi-Gloss Polyurethane Coating

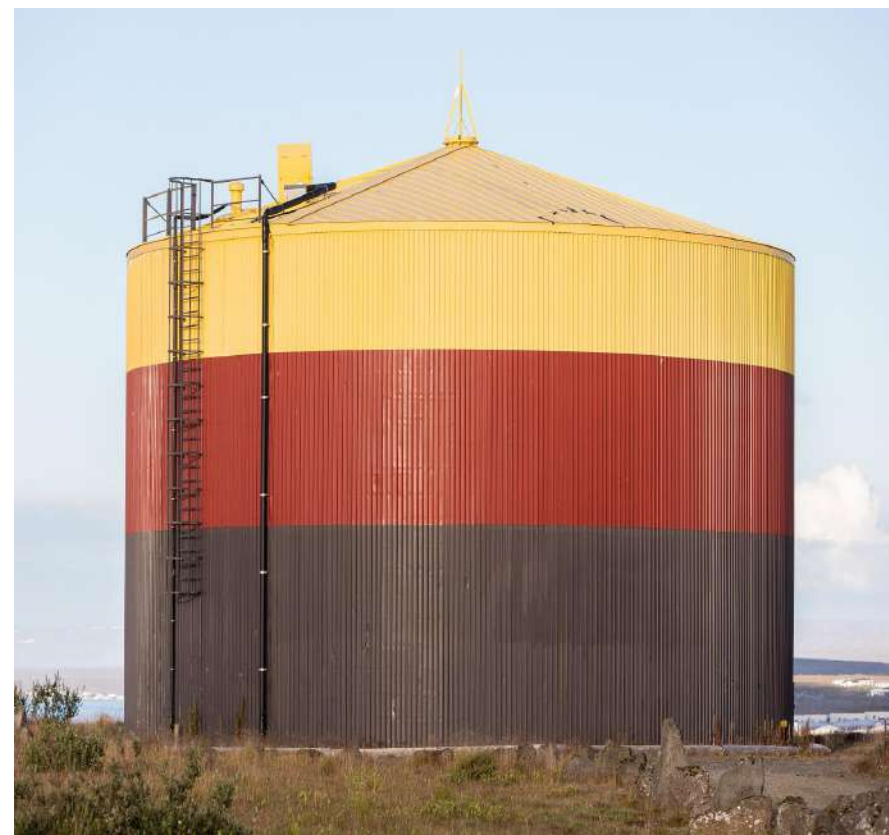
Product Description:

PUR-PC50 is a high solid content two-component, semi-glossy polyurethane coating with aliphatic isocyanate as the hardener.

Typical uses and features:

Field for industrial protective paint: Recommended for coating on tank exteriors, steel structure buildings and other steel structures.

- ◆ This is the best choice when a high solids topcoat with excellent gloss and color retention is required.
- ◆ Pre-qualified in NORSOK System 1, making it an excellent choice for the most demanding applications such as offshore environments, refineries, power plants and bridges.
- ◆ Excellent weather and abrasion resistance. It forms an easy-to-clean, non-chalkifying topcoat with good gloss and color retention.
- ◆ Used as a semi-gloss topcoat for epoxy systems exposed to weathering.



Product data:

Item	Result	In accordance with
Solid Content $\pm 2\%$	76	ISO 3251 (Admixture)
Solid Volume $\pm 2\%$	65	ISO 3233 (Admixture)
Density kg/L (± 0.1)	1.3	Theoretical value
Gloss	Semi-Gloss	ISO 2813
Color	BAYD、RAL、NCS color card, system advanced coloring	

PUR-PC80 High-Gloss Polyurethane Coating

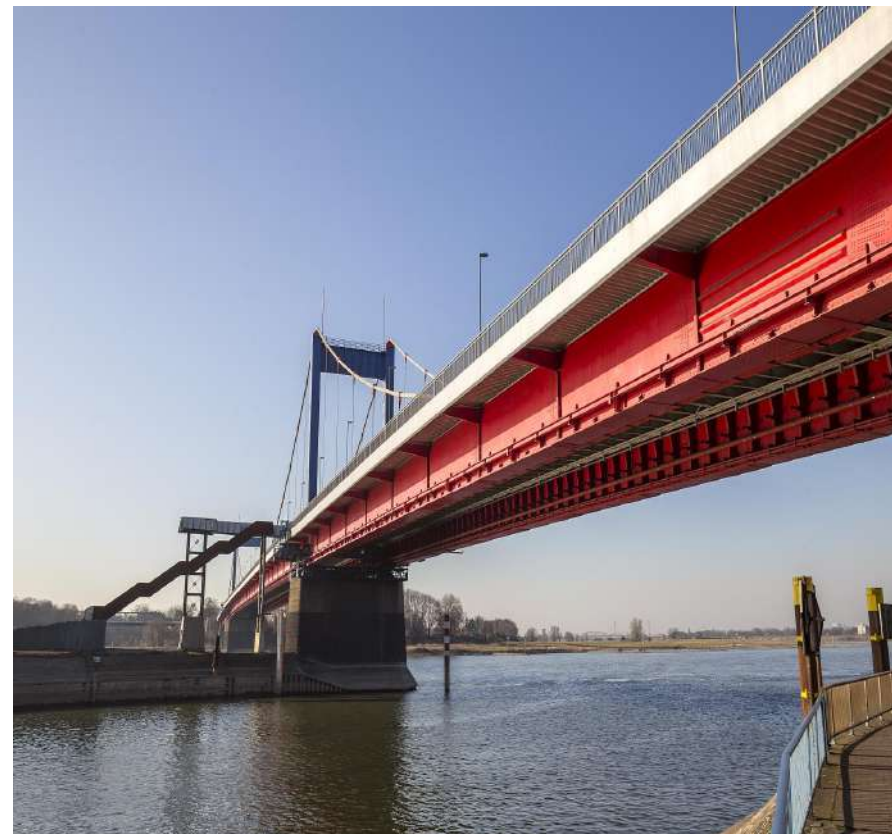
Product Description:

PUR-PC80 is a two-component, glossy polyurethane coating with high solid content and the hardener is aliphatic isocyanate.

Typical uses and features:

Field for industrial protective paint: Recommended for coating on shipping and transport equipment, storage tank exteriors, steel frames and other steel structures, machinery and equipment.

- ◆ This is the best choice when a high solids topcoat with excellent gloss and color retention is required.
- ◆ Especially suitable for harsh environments. The topcoats help to extend the service life of the painting system.
- ◆ Due to the use of polyurethane resin, the coating has excellent weather resistance and abrasion resistance. It forms an easy-to-clean, non-chalkifying topcoat with good gloss and color retention.



Product data:

Item	Result	In accordance with
Solid Content $\pm 2\%$	77	ISO 3251 (Admixture)
Solid Volume $\pm 2\%$	66	ISO 3233 (Admixture)
Density kg/L (± 0.1)	1.3	Theoretical value
Gloss	High Gloss	ISO 2813
Color	BAYD、RAL、NCS color card, system advanced coloring	

PUR-SC20 Matte Polyurethane Coating

Product Description:

PUR-SC20 is a two-component quick-drying semi-matte polyurethane coating containing anti-corrosion pigments and the hardener is aliphatic isocyanate.

Typical uses and features:

Field for industrial protective paint: Particularly recommended for use as a single coating on agricultural and earthmoving machinery and other mechanical equipment.

- ◆ Active anti-corrosion pigments ensure corrosion resistance even in harsh climate conditions.
- ◆ It helps to speed up the painting process and reduce the overall cost of the painting system.
- ◆ Due to the use of polyurethane resin, it has good gloss and color retention. It forms a durable, easy-to-clean, non-chalking finish.
- ◆ Excellent weather resistance and abrasion resistance.
- ◆ Can be applied directly to metal surfaces.
- ◆ Quick curing.



Product data:

Item	Result	In accordance with
Solid Content $\pm 2\%$	74	ISO 3251 (Admixture)
Solid Volume $\pm 2\%$	62	ISO 3233 (Admixture)
Density kg/L (± 0.1)	1.3	Theoretical value
Gloss	Semi-Matte	ISO 2813
Color	BAYD、RAL、NCS color card, system advanced coloring	

PUR-SC50 Semi-Gloss Polyurethane Coating

Product Description:

PUR-SC50 is a two-component quick-drying semi-gloss polyurethane coating containing anti-corrosion pigments and the hardener is aliphatic isocyanate.

Typical uses and features:

Field for industrial protective paint: Particularly recommended for use as a single coating on agricultural machinery, earthmoving machinery and other mechanical equipment. Suitable as a topcoat in epoxy/polyurethane systems exposed to weathering and chemical stress environments, such as tank exteriors, steel frames and other steel structures.

- ◆ Specially developed for single-coating of agricultural machinery and earth-moving machinery. Active anti-corrosion pigments ensure its corrosion resistance even in harsh climatic conditions.
- ◆ It helps to speed up the painting process and reduces the overall cost of the painting system.
- ◆ Due to the chemical composition of polyurethane, it has good gloss and color retention. It forms a durable, easy-to-clean, non-chalking finish.
- ◆ Excellent weather resistance and abrasion resistance.
- ◆ Can be applied directly to metal surfaces.
- ◆ Quick curing.



Product data:

Item	Result	In accordance with
Solid Content $\pm 2\%$	77	ISO 3251 (Admixture)
Solid Volume $\pm 2\%$	65	ISO 3233 (Admixture)
Density kg/L (± 0.1)	1.4	Theoretical value
Gloss	Semi-Gloss	ISO 2813
Color	BAYD、RAL、NCS color card, system advanced coloring	

PUR-SC80 High-Gloss Polyurethane Coating

Product Description:

PUR-SC80 is a two-component quick-drying glossy polyurethane coating containing anti-corrosion pigments and the hardener is aliphatic isocyanate.

Typical uses and features:

Field for industrial protective paint: Suitable as a topcoat in epoxy/polyurethane systems exposed to weathering and chemical stress, such as tank exteriors, steel frames and other steel structures.

- ◆ Specially developed for single-coating of agricultural machinery and earth-moving machinery. Active anti-corrosion pigments ensure its corrosion resistance even in harsh climatic conditions.
- ◆ It helps to speed up the painting process and reduces the overall cost of the painting system.
- ◆ It can be coated up to 125μm at one time without sagging.
- ◆ Excellent weather resistance and abrasion resistance.
- ◆ Durable, easy to clean and non-chalking topcoat with good gloss and color retention.
- ◆ When coated as a single layer, the corrosion level can reach C4-M.
- ◆ Can be applied directly to metal surfaces.
- ◆ Quick curing.



Product data:

Item	Result	In accordance with
Solid Content±2%	80	ISO 3251 (Admixture)
Solid Volume±2%	65	ISO 3233 (Admixture)
Density kg/L (±0.1)	1.4	Theoretical value
Gloss	Gloss	ISO 2813
Color	BAYD、RAL、NCS color card, system advanced coloring	

BLA-400 High Temperature Resistant Paint 400° - 450°

Product Description:

BLA-400 is a heat-resistant silicone resin paint. Withstands dry heat temperatures up to +400° C.

Typical uses and features:

Field for industrial protective paint: Recommended for use on the exterior of steel structures exposed to high temperatures. Suitable for fireplace doors, flues, exhaust pipes, sauna stoves and other hot metal surfaces indoor and outdoor.

- ◆ Used in the conditions where heat-resistant products are required, such as fireplace doors, flues, exhaust pipes, sauna stoves.
- ◆ Withstands dry hot of the steel surfaces up to +400°C.
- ◆ For industrial use only in accordance with Directive 1999/13/EC.



Product data:

Item	Result	In accordance with
Solid Content $\pm 2\%$	19	ISO 3251
Solid Volume $\pm 2\%$	34	ISO 3233
Density kg/L (± 0.1)	1.1	ISO 2811
Gloss	Matte	ISO 2813
Color	Black	

BLA-600 High Temperature Resistant Paint 600° - 650°

Product Description:

BLA-600 is a heat-resistant silicon-aluminum coating. Withstands dry heat temperatures up to +650° C.

Typical uses and features:

Field for industrial protective paint: Recommended for use on the exterior of steel structures exposed to high temperatures.

- ◆ Used in the conditions where heat-resistant products are required, such as fireplace doors, flues, exhaust pipes, sauna stoves.
- ◆ Withstands dry heat temperatures up to +650°C on unprimed steel surface and +400°C on zinc silicate coatings.
- ◆ It can be sprayed with airless spraying equipment.



Product data:

Item	Result	In accordance with
Solid Content $\pm 2\%$	51	ISO 3251
Solid Volume $\pm 2\%$	34	ISO 3233
Density kg/L (± 0.1)	1.2	Theoretical value
Gloss	Metal Gloss	ISO 2813
Color	Aluminium	

AR-D1071 Acrylic Primer

Product Description:

AR-D1071 is a fast-drying, one-component acrylic primer.

Typical uses and features:

Main uses: Acrylic primer is used for various types of transportation vehicles, construction machinery, high-end instruments and other objects that require high-end decoration on the surface. It is especially suitable for outdoor use.

- ◆ Acrylic primer has excellent weather resistance;
- ◆ The paint film has good decorative properties (full and bright, high hardness);
- ◆ Good chemical resistance; fast drying
- ◆ Excellent gloss and color retention properties;
- ◆ High adhesion, good mechanical properties.



Product data:

Item	Result	In accordance with
Solid Content $\pm 2\%$	65	ISO 3251
Solid Volume $\pm 2\%$	51	ISO 3233
Density kg/L (± 0.1)	1.35	ISO 2811
Gloss	Matte	ISO 2813
Color	Gray and iron red	

AR-M50 Acrylic Topcoat

Product Description:

AR-M50 is a quick-drying, one-component acrylic topcoat.

Typical uses and features:

Field for industrial protective paint: Recommended for use on bridges, cranes, conveyors, port equipment and tank exteriors.

- ◆ Easy to use during painting process. Due to its high film-forming properties, the coating can be applied in thick layers, thus shortening the application process.
- ◆ Can be used at sub-zero temperatures, making it suitable for surfaces exposed to marine or industrial climates and mild chemical stress.
- ◆ Withstands dry heat up to +80°C.



Product data:

Item	Result	In accordance with
Solid Content $\pm 2\%$	52	ISO 3251
Solid Volume $\pm 2\%$	38	ISO 3233
Density kg/L (± 0.1)	1.1	Theoretical value
Gloss	Semi-Gloss	ISO 2813
Color	BAYD、RAL、NCS color card, system advanced coloring.	

CR-D1134 Chlorinated Rubber Primer

Product Description:

CR-D1134 is a one-component self-drying paint composed of chloroether resin, anti-rust pigment and aluminum powder.

Typical uses and features:

Industrial paint protective field: a tolerant anti-rust paint, used as heavy anti-corrosion primer for various parts of ships, port machinery, bridges and other steel structures. Also suitable for new shipbuilding, repair, maintenance and on-going maintenance.

- ◆ It has good adhesion to steel, concrete and wood.
- ◆ It dries quickly and construction is not restricted by seasons. It can be applied normally from -20°C to 40°C, and it can be recoated after 4 to 6 hours.
- ◆ Easy to use. Single component, stir well after opening the bucket and it is ready to use. It can be constructed using various methods such as high-pressure airless spraying, brushing, and roller coating.
- ◆ Resistant to sunlight aging, protects midcoat and bottom coats.



Product data:

Item	Result	In accordance with
Solid Content $\pm 2\%$	59	ISO 3251
Solid Volume $\pm 2\%$	34	ISO 3233
Density kg/L (± 0.1)	1.2-1.35	ISO 2811
Gloss	Matte	ISO 2813
Color	BAYD、RAL、NCS color card, system advanced coloring.	

CR-M576 Chlorinated Rubber Topcoat

Product Description:

CR-M576 is a fast-drying chlorinated rubber topcoat suitable for ship anti-corrosion.

Typical uses and features:

Industrial paint protective field: This paint is used to protect the surfaces of ships, bridges, port facilities, chemical equipment, steel software, etc. It is a high-performance anti-corrosion coating.

- ◆ The paint film is tough, dries quickly, and it has excellent weather and chemical resistance.
- ◆ Excellent water resistance and mildew resistance.
- ◆ It has excellent construction performance and can be constructed in high temperature environments of 20-50 degrees Celsius.
- ◆ It has good dry-wet alternating properties. When repairing the chlorinated rubber paint film, it is not necessary to remove the strong old paint film, making it easy to repair.



Product data:

Item	Result	In accordance with
Solid Content $\pm 2\%$	56	ISO 3251
Solid Volume $\pm 2\%$	45	ISO 3233
Density kg/L (± 0.1)	1.1	ISO 2811
Gloss	Semi-Gloss	ISO 2813
Color	BAYD、RAL、NCS color card, system advanced coloring.	

CR-FW33 Antifouling Paint

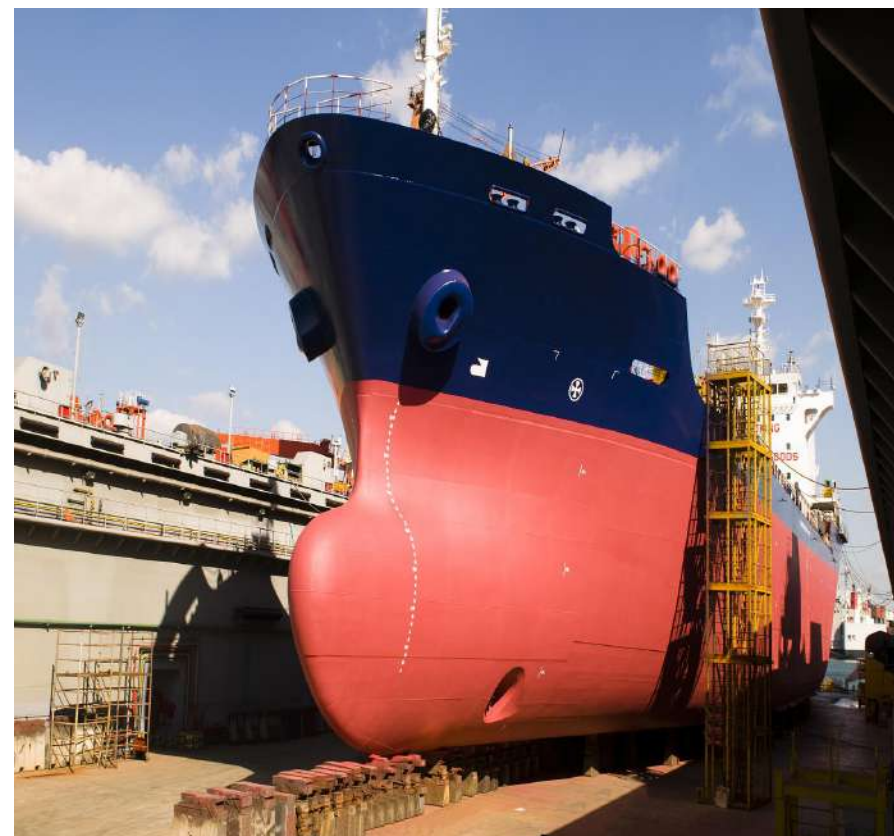
Product Description:

CR-FW33 is a self-drying paint composed of resin, cuprous oxide and rosin.

Typical uses and features:

Industrial paint protective field: This paint is suitable for coating the bottom of ships, offshore facilities, oil platforms, buoys, and docks to prevent the adhesion and growth of marine organisms or for the anti-corrosion of concrete surfaces.

- ◆ Good adhesion
- ◆ Strong anti-fouling ability
- ◆ Can prevent marine fouling organisms from adhering to the hull for a long time
- ◆ Keep the bottom of the boat clean, save fuel and extend the time between maintenance.
- ◆ It is easy to construct and dries quickly, and the construction is basically not limited by season and temperature.



Product data:

Item	Result	In accordance with
Solid Content $\pm 2\%$	70	ISO 3251
Solid Volume $\pm 2\%$	61	ISO 3233
Density kg/L (± 0.1)	1.55	ISO 2811
Gloss	Matte	ISO 2813
Color	Iron red and Reddish brown	

AK-D11 Alkyd metal primer

Product Description:

AK-D11 is a single-component alkyd paint. It is a primer product with features to be quick drying and anti-corrosion.

Typical uses and features:

Field for industrial protective paint: Interior and exterior surfaces of ships above the waterline, exteriors of storage tanks, agricultural machinery and other surfaces that require particularly good adhesion and anti-corrosion properties.

- ◆ Used for surfaces that require particularly good anti-corrosion properties. Recommended to be used for new coating and maintenance coatings of container, agricultural machinery and other steel structures.
- ◆ Drying speed is fast, so it can be recoated quickly.
- ◆ Minimize damage caused by burning, welding and flame cutting. Burnt paint can be easily removed by brushing or scrubbing.
- ◆ It can also be used in dry indoor areas and can be used on steel surfaces without any topcoat.



Product data:

Item	Result	In accordance with
Solid Content $\pm 2\%$	65	ISO 3251
Solid Volume $\pm 2\%$	47	ISO 3233
Density kg/L (± 0.1)	1.29	Theoretical value
Gloss	Matte	ISO 2813
Color	Gray and reddish brown	

AK-D13 Alkyd Marine Primer

Product Description:

AK-D13 is a quick-drying, single-component, anti-corrosion alkyd primer.

Typical uses and features:

Field for industrial protective paint: It is the ideal choice for assembly equipment and painting stations with fast production cycles. It is used for alkyd systems of steel structures, construction and other machinery.

- ◆ This product has a CCS (Marine Equipment Directive) certificate with the number to be GZ21PWA00013, so it can be used for painting the interior surfaces of ships.
- ◆ Primer in alkyd system for steel surfaces exposed to weathering.
- ◆ It can also be used in dry indoor areas and can be used on steel surfaces without any topcoat.



Product data:

Item	Result	In accordance with
Solid Content $\pm 2\%$	70	ISO 3251
Solid Volume $\pm 2\%$	51	ISO 3233
Density kg/L (± 0.1)	1.29	Theoretical value
Gloss	Matte	ISO 2813
Color	Gray and Reddish brown	

AK-M20 Matte/Alkyd Topcoat

Product Description:

AK-M20 is a fast-drying, single-component, semi-matte, corrosion-resistant, single-coating alkyd paint.

Typical uses and features:

Field for industrial protective paint: Easy to spray. This coating is the ideal choice for using in workshops with fast production cycles. This product is used on steel frames and different types of mechanical equipment.

- ◆ It has been used in hundreds of projects over the past few years, thus proving the reliability of the product.
- ◆ Good application performance.
- ◆ It can also be used as a primer for alkyd resin coating systems.
- ◆ Recommended for use as a single coating system on steel surfaces.



Product data:

Item	Result	In accordance with
Solid Content $\pm 2\%$	64	ISO 3251
Solid Volume $\pm 2\%$	50	ISO 3233
Density kg/L (± 0.1)	1.1-1.3	Theoretical value
Gloss	Semi-Matte	ISO 2813
Color	BAYD、RAL、NCS color card, system advanced colored.	

AK-M50 Semi-gloss/Alkyd Topcoat

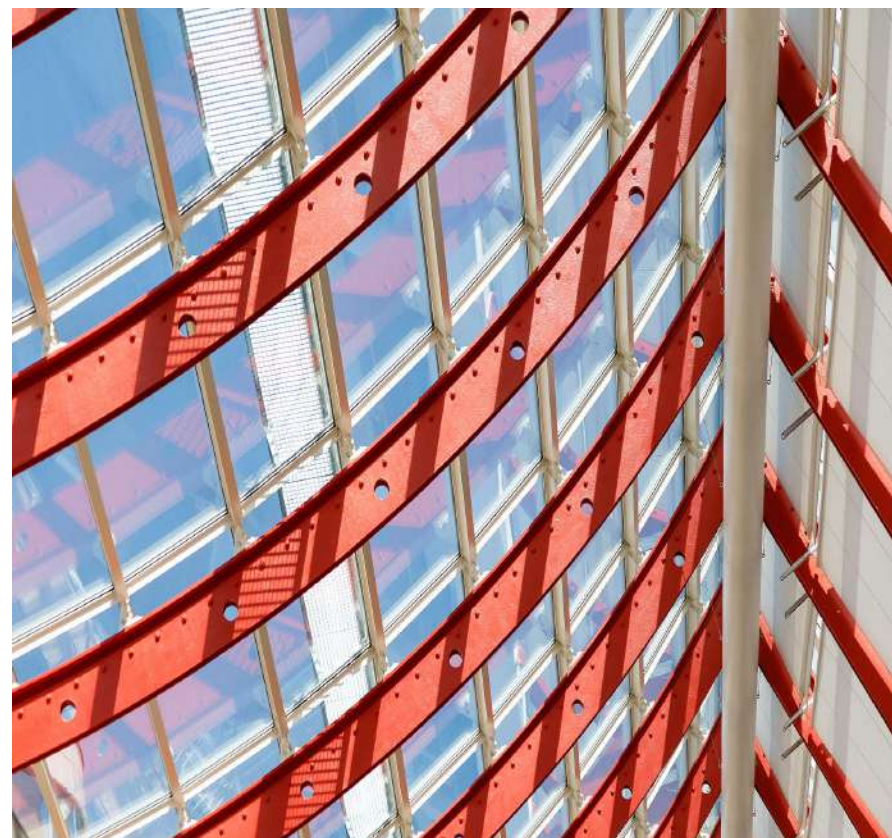
Product Description:

AK-M50 is a fast-drying, single-component, semi-glossy alkyd topcoat containing preservative pigments.

Typical uses and features:

Field for industrial protective paint: Recommended to use for steel frames, working platforms and different types of machinery and equipment.

- ◆ It can be used as a single coating system and primer on steel surfaces. This coating is the ideal solution for workshops and painting stations with fast production cycles.
- ◆ It has good gloss and color retention when exposed to rural conditions.
- ◆ It has been used in hundreds of projects over the past few years, thus proving the reliability of the product.
- ◆ A semi-gloss topcoat for alkyd systems on steel surfaces, Also suitable for electrostatic coating.
- ◆ It contains anti-corrosion pigments and can also be used as a single-coating system.



Product data:

Item	Result	In accordance with
Solid Content $\pm 2\%$	60	ISO 3251
Solid Volume $\pm 2\%$	47	ISO 3233
Density kg/L (± 0.1)	1.0-1.2	Theoretical value
Gloss	Semi-gloss	ISO 2813
Color	BAYD、RAL、NCS color card, system advanced colored.	

AK-M70 High Gloss/Alkyd Topcoat

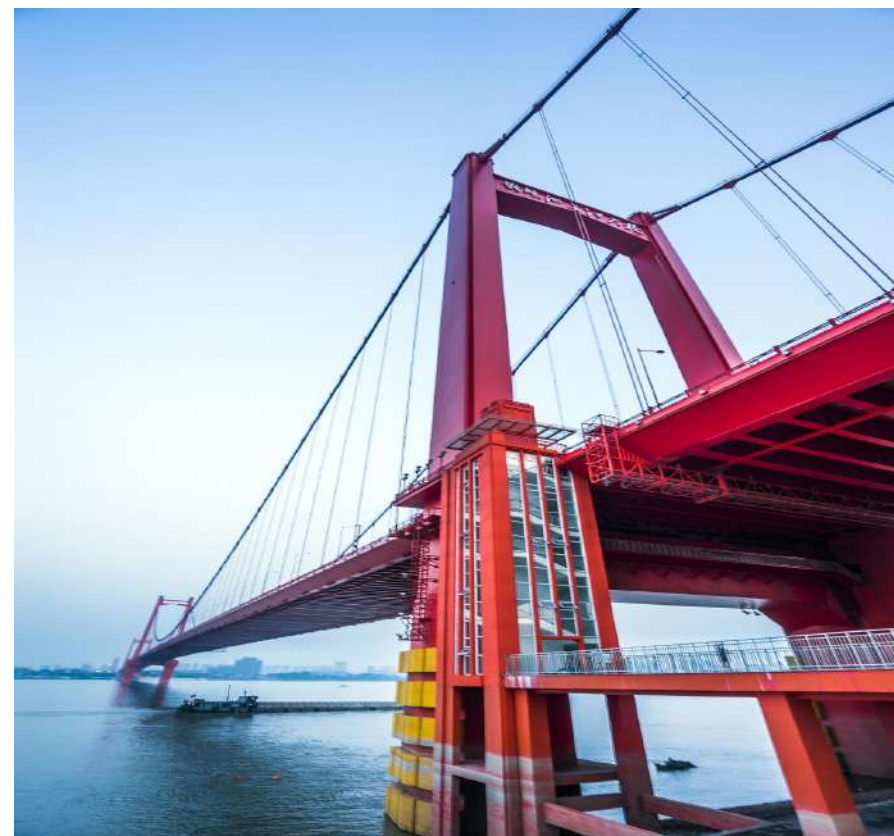
Product Description:

AK-M70 is a single-component gloss alkyd topcoat.

Typical uses and features:

Field for industrial protective paint: Particularly recommended to use for field coating of bridges, tank exteriors, structural steel and other steel surfaces.

- ◆ Easy-to-apply topcoat developed specifically for on-site maintenance applications.
- ◆ It forms an even paint surface with good gloss and color retention even in industrial environments. When diluted with mineral oil, it remains longer opening time.
- ◆ A glossy alkyd-based topcoat suitable for metal surfaces indoor and outdoor.
- ◆ It can also be applied with a brush.
- ◆ It can also be used on wood.



Product data:

Item	Result	In accordance with
Solid Content $\pm 2\%$	63	ISO 3251
Solid Volume $\pm 2\%$	48	ISO 3233
Density kg/L (± 0.1)	1.1	Theoretical value
Gloss	Gloss	ISO 2813
Color	BAYD、RAL、NCS color card, system advanced colored.	

AK-M80 High Gloss/Alkyd Topcoat

Product Description:

AK-M80 is a quick-drying, single-component gloss alkyd topcoat.

Typical uses and features:

Field for industrial protective paint: Used as topcoat in alkyd resin systems.

This coating is an ideal solution for workshop and on-site painting with fast production cycles. Recommended for use on steel structures, working platforms and different types of machinery and tools.

- ◆ Available in a almost unlimited range of colors, including metallic effects.
- ◆ It has good gloss and color retention when exposed to rural conditions.
- ◆ It has been used in hundreds of projects over the past few years, thus proving the reliability of the product.
- ◆ It is also suitable for electrostatic spray painting.



Product data:

Item	Result	In accordance with
Solid Content $\pm 2\%$	60	ISO 3251
Solid Volume $\pm 2\%$	45	ISO 3233
Density kg/L (± 0.1)	1.0-1.2	Theoretical value
Gloss	High-gloss	ISO 2813
Color	BAYD、RAL、NCS color card, system advanced colored.	

AK-M90 High Gloss/Alkyd Topcoat

Product Description:

AK-M90 is a high gloss, single component alkyd topcoat.

Typical uses and features:

Field for industrial protective paint: Recommended to be used for small tanks, agricultural machinery, transportation equipment and other machinery and equipment.

- ◆ It is used when there are high requirements for color and gloss retention.
- ◆ It gives the surface a high-quality appearance. It's the perfect choice when an easy-to-apply product with a great look is needed.
- ◆ It has good gloss and color retention when exposed to weathering.
- ◆ It can be painted by using "wet-on-wet" painting technique.
- ◆ Suitable for industrial finish machining.



Product data:

Item	Result	In accordance with
Solid Content $\pm 2\%$	57	ISO 3251
Solid Volume $\pm 2\%$	45	ISO 3233
Density kg/L (± 0.1)	0.9-1.1	Theoretical value
Gloss	High-gloss	ISO 2813
Color	BAYD、RAL、NCS color card, system advanced colored.	

WE-D15 Water-Based Epoxy Primer

Product Description:

WE-D15 is a two-component water-based epoxy primer.

Typical uses and features:

Field for industrial protective paint: Recommended for use on frames, service platforms, conveyors and other steel structures, machinery and tools.

- ◆ Epoxy primer suitable for steel in highly corrosive environments. Due to its good adhesion to the substrate and subsequent coatings, the primer ensures high mechanical properties and chemical resistance of the coating system.
- ◆ Used as an intermediate coat in NORSOK approved paint systems. Approval demonstrates the coating system's ability to perform in offshore environments.
- ◆ It can also be recoated with solvent-based topcoat. This coating can be mixed with the system to replace solvent-based primers and/or midcoats.
- ◆ Used as a primer or midcoat in epoxy/polyurethane systems. It can also be used as a topcoat in epoxy coating systems or as a single coat on steel surfaces.
- ◆ Resistant to diesel and biodiesel (RME) fuels.



Product data:

Item	Result	In accordance with
Solid Content $\pm 2\%$	62	ISO 3251 (Admixture)
Solid Volume $\pm 2\%$	47	ISO 3233 (Admixture)
Density kg/L (± 0.1)	1.4	Theoretical value
Gloss	Matte	ISO 2813
Color	BAYD primer color card	

WZF-D85 Water-Based Epoxy Zinc-Rich Primer

Product Description:

WZF-D85 is a two-component water-based epoxy zinc-rich coating.

Typical uses and features:

Field for industrial protective paint: Recommended to be used for bridges, cranes and steel frames as well as steel structures and equipment in the forestry and chemical industries, such as tubular bridges, conveyors etc.

- ◆ Provides a more environmentally friendly option for bridges, cranes and steel frames, as well as steel structures and equipment in the forestry and chemical industries.
- ◆ Designed as a primer for water-based epoxy, polyurethane and acrylic systems on steel surfaces exposed to harsh climatic conditions with corrosion levels up to C5.
- ◆ Provides cathodic protection to steel.
- ◆ Can be used on weathered surfaces without a topcoat.



Product data:

Item	Result	In accordance with
Solid Volume±2%	44	ISO 3233 (Admixture)
Density kg/L (±0.1)	2.4	Theoretical value
Gloss	Matte	ISO 2813
Color	Grey	

WPE-M50 Water-Based Epoxy Topcoat

Product Description:

WPE-M50 is a two-component water-based epoxy topcoat or single coating.

Typical uses and features:

Field for industrial protective paint: Recommended for use on frames, service platforms, conveyors and other steel structures, machinery and equipment.

- ◆ A semi-gloss epoxy coating used as a single coating paint, primer, midcoat or topcoat in an epoxy or polyurethane system on steel surfaces. It dries quickly and can be applied in thick layers.
- ◆ It is an ideal choice when low VOC content is required. The coating has very good resistance to mechanical and chemical stress. This product provides protection comparable to solvent-based epoxy coatings.
- ◆ This system has excellent adhesion and surface resistance. At the same time, very fast production cycles can be achieved.
- ◆ Fast curing, environmentally friendly (low VOC).
- ◆ Resistant to diesel and biodiesel (RME) fuels.



Product data:

Item	Result	In accordance with
Solid Content $\pm 2\%$	62	ISO 3251 (Admixture)
Solid Volume $\pm 2\%$	47	ISO 3233 (Admixture)
Density kg/L (± 0.1)	1.3	Theoretical value
Gloss	Semi-Gloss	ISO 2813
Color	BAYD、RAL、NCS color card, system advanced coloring.	

WPU-M90 Water-Based Polyurethane Topcoat

Product Description:

WPU-M90 is a two-component water-based polyurethane topcoat.

Typical uses and features:

Field for industrial protective paint: Recommended for agricultural and earth-moving machinery, steel frames and other steel structures, machinery and equipment.

- ◆ Forms a topcoat with excellent gloss and color retention. This coating is the perfect solution for environments where aesthetics and resistance are critical.
- ◆ Forms a durable, easy-to-clean, non-chalkifying paint film that resists climatic stresses. This product is used as a topcoat for epoxy/polyurethane systems on steel surfaces exposed to weathering, abrasion and chemical stress. More user-friendly and environmentally friendly than traditional solvent-based products.
- ◆ Can be cured at higher temperatures.



Product data:

Item	Result	In accordance with
Solid Content $\pm 2\%$	60	ISO 3251 (Admixture)
Solid Volume $\pm 2\%$	47	ISO 3233 (Admixture)
Density kg/L (± 0.1)	1.2	
Gloss	High-Gloss	ISO 2813
Color	BAYD、RAL、NCS color card, system advanced coloring.	

WAS-M50 Water-Based Alkyd Topcoat

Product Description:

WAS-M50 is a water-based one-component quick-drying alkyd modified paint containing active anticorrosive pigments.

Typical uses and features:

Field for industrial protective paint: Recommended to be used for steel frames, work platforms and different types of machinery and equipment.

- ◆ Excellent sagging resistance, a thick paint film can be formed in one application.
- ◆ Due to its good anti-corrosion properties, it can be used as a single coating. This product is also suitable as a topcoat.
- ◆ Can be colored into thousands of colors.
- ◆ Suitable for product coating in the metal industry and painting stations.
- ◆ Particularly recommended as a single layer coating system for interior and exterior steel structures.
- ◆ Using higher temperatures can shorten drying time.



Product data:

Item	Result	In accordance with
Solid Content $\pm 2\%$	51	ISO 3251
Solid Volume $\pm 2\%$	41	ISO 3233
Density kg/L (± 0.1)	1.2	Theoretical value
Gloss	Semi-Gloss	ISO 2813
Color	BAYD、RAL、NCS color card, system advanced coloring.	

WPA-M50 Water-Based Acrylic Topcoat

Product Description:

WPA-M50 is a water-based, one-component, fast-drying acrylic paint containing active anti-corrosion pigments.

Typical uses and features:

Field for industrial protective paint: Recommended for steel frames, work platforms and different types of machinery and equipment.

- ◆ It can be painted directly on steel without any primer. The product adheres very well to the surface and forms a tight protective paint film.
- ◆ Quick drying enables rapid recoating, thereby shortening the overall painting time.
- ◆ Can be colored into thousands of colors.
- ◆ Used as primer or topcoat for interior and exterior steel surfaces.
- ◆ Can be coated with a variety of products, as well as solvent-based products.
- ◆ Using higher temperatures can shorten drying time.



Product data:

Item	Result	In accordance with
Solid Content $\pm 2\%$	58	ISO 3251
Solid Volume $\pm 2\%$	47	ISO 3233
Density kg/L (± 0.1)	1.2	Theoretical value
Gloss	Optional	ISO 2813
Color	BAYD、RAL、NCS color card, system advanced coloring.	

WACR-M2 Water-Based Reflective Thermal Insulation Paint

Product Description:

WACR-M2 is formulated with water-based acrylic emulsion as the film-forming base material, adding anti-rust pigments, weather-resistant pigments, reflective glass beads and other materials. Anti-rust pigments with high content of heavy metals such as chromium and lead are not added.

Typical uses and features:

Industrial paint protective field:

- ◆ It is suitable for chemical petroleum storage tanks, metal workshops, locomotive carriages, metal pipes and other metal products that have both heat insulation and higher anti-corrosion requirements.
- ◆ It has excellent weather resistance, UV resistance and self-cleaning function;
- ◆ Excellent near-infrared and visible light reflection properties, it can provide excellent thermal insulation effect when used in conjunction with thermal insulation primer;
- ◆ Excellent acid resistance, salt water resistance, salt spray resistance and wide applicability.



Product data:

Item	Result	In accordance with
Solid Content $\pm 2\%$	61	ISO 3251
Solid Volume $\pm 2\%$	40	ISO 3233
Density (KG/L)	1.25 ± 0.02	ISO 2811
Gloss (GU 60°)	Matte	ISO 2813
Sunlight reflectance	0.92	≥ 0.85
Hemispheric reflectance	0.94	≥ 0.85
Color	White	

Merchants join

Product Support



Industrial coatings



Floor coating



Decorative Paints



Waterproof coating



Nergy-saving coating

Market brand support



Market support

Marketing network spreads all over the world

Continuously supplying customers to franchisees

Brand and technical support

China's powerful brand of industrial coatings

20 professional operations

Strong technical team



Policy Support

01 Diversification of cooperation policies

Exclusive management rights and independent downline development; BAYD is positioned as a service-oriented enterprise, BAYD exits sales in franchised dealer areas, customer resources are transferred free of charge, and business consulting and guidance for engineering projects is provided; assists dealers with marketing guidance, etc.

03 Diversification of cooperation methods

Self-operated distribution, direct project sales, project cooperation, profit sharing, etc.

02 The company supports diversity

We provide support for major projects, price support, business information support, production technology support, daily business support, fund allocation support, and advertising support in various media all year round.

04 Diversified reward methods

A variety of incentives to win profits and promote development: as long as the sales are rewarded; the more sales, the more rewards.



Service support

Full consultation and full cooperation

In order to provide high-quality after-sales construction services to customers, BAYD has established a technical team and a construction team, and formulated a complete set of coating operation specifications and a three-level engineering inspection management system. According to the customer's project design requirements and capital budget, we provide customers with the best solutions and gold medal services.

Made in China



Guangdong Bayide New Material Technology Co., Ltd

Add: 1434, Donglian Building, No. 574 Xingtan Shuixiang Avenue, Gaozan Village, Xingtan Town ,
Shunde District, Foshan City, Guangdong Province

Tel: 0757-26172113

E-mail: BAYD@fsbayi.com